

THE NETHERLANDS
(N E D E R L A N D)



COMMUNICATION

Concerning ⁽¹⁾:

- ~~approval granted~~
- approval extended
- ~~approval refused~~
- ~~approval withdrawn~~
- ~~production definitively discontinued~~

of a type of safety-belt or ~~restraint system~~ for adult occupants of power-driven vehicles pursuant to Regulation number 16.

Approval mark:



Approval number: E4-16R-0644804

Extension number: 01

1. ~~Restraint system (with)/three point belt/lap belt/special type belt/fitted (with) energy absorber/retractor/device for height adjustment of the upper pillar loop/flexible shoulder adjustment device for height~~ ⁽²⁾
2. Trade name or mark : Quanzhou Kwok Shing Automobile Subassembly Co., Ltd.
3. Manufacturer's designation of the type of belt or restraining system : KS28.215A
4. Manufacturer's name : Quanzhou Kwok Shing Automobile Subassembly Co., Ltd.
5. If applicable, name of his representative : Quanzhou Fuxing Plastic Hardware Co., Ltd.
6. Address : Kwok Shing Mansion, Wanggong Industrial Area, Quanzhou City, Fujian Province, P.R. China

7. Submitted for approval on : 01.08.2015
20.06.2020
8. Technical service responsible for conducting approval tests : IDIADA Automotive Technology, S.A.
L'Albornar, P.O. Box 20
43710 Santa Oliva (Tarragona)
Spain
TÜV SÜD Auto Service GmbH
Westendstraße 199
D-80686 München
9. Date of test report issued by that service : 28.03.2014
24.06.2020
10. Number of test report issued by that service : CN15090165
20-00953-CX-SHA-00
11. Reason(s) of extension (if applicable) : 1. To change the trade mark
2. To change technical service to TUV SUD
12. Type of device : deceleration/~~acceleration~~⁽¹⁾
13. Approval : ~~granted/refused/extended/withdrawn~~⁽¹⁾/for
fixation to the general anchorage positions as
defined in Annex 6, figure 1 to this Regulation
~~/for use in a specific vehicle or in specific types~~
~~of vehicles~~^{(1) (3)}
14. Position and nature of the marking : Label stitched at lower outer sill anchor bracket
on long end assembly
15. Place : Zoetermeer
16. Date :
17. Signature :
18. Annexed to this communication is a list of documents in the approval file deposited at Type Approval Authorities having delivered the approval and which can be obtained upon request.
- Application form, relating to ECE approval for a type of safety belt or restraint system pursuant to Regulation number 16.
 - Description including drawings and specifications.
 - Test report.

⁽¹⁾ Strike out what does not apply.

⁽²⁾ Indicate which type.

⁽³⁾ If a safety-belt is approved following the provisions of paragraph 6.4.1.3.3. of this Regulation, this safety-belt shall only be installed in an outboard front seating position protected by an airbag in front of it, under the condition that the vehicle concerned is approved to Regulation number 94, 01 series of amendments or its later version in force.

If a safety-belt is approved following the provisions of paragraph 6.4.1.3.4. of this Regulation, this safety-belt shall only be installed in a seating position protected by an airbag in front of it.

TEST REPORT

No.: 20-00953-CX-SHA-00

Test of a type of component
with regard to

UN/ECE Regulation No. 16

including all amendments up to
supplement 00 to the 06 series of amendments

Approval subject:

**I. SAFETY-BELTS, RESTRAINT SYSTEMS, ~~CHILD RESTRAINT SYSTEMS AND ISOFIX~~
~~CHILD RESTRAINT SYSTEMS~~ FOR OCCUPANTS OF POWER-DRIVEN VEHICLES**

Approval status		
<input type="checkbox"/>	Granting of a type approval	
<input checked="" type="checkbox"/>	Extension/ correction to type approval no.	E4-16R-0644804 Ext. 00

I. General

Trade name or mark	: <u>Quanzhou Kwok Shing Automobile Subassembly Co., Ltd.</u>
Type	: KS28.215A
Commercial description	: Two point automatically locking seat belt
- With pre-loading device	: N/A
Name and address of the manufacturer	: Quanzhou Kwok Shing Automobile Subassembly Co., Ltd. Kwok Shing Mansion, Wanggong Industrial Area, Quanzhou City, Fujian Province, P.R. China
Address(es) of assembly plant(s)	: Same as above
Position of the approval mark	: A textile label sewn on the webbing inside of the retractor
List of vehicle(s) on which the safety belt can be fitted	
-Vehicle type / category	: VEGA M2/M3
-The safety belt is intended for use as	: BACK ROW

II. Test results

The extension has no negative influence to the test results mentioned in the approval with No.: E4-16R-0639221 Ext. 02. Therefore the results are remaining valid.

III. Enclosures

Information folder No. KS28.215A-01 dated 2020-06-20 (YYYY-MM-DD)

IV. Statement of conformity

The mentioned information folder and the type described therein are in accordance with the test basis mentioned above. The worst-case was selected in accordance with document "Requirements for Test Reports (AS-PB-T-02)".

The test report may be reproduced and published in full and by the client only. It can be reproduced partially with the written permission of the test laboratory only.

TÜV SÜD Auto Service GmbH is designated as Technical Service by:

Approval authority	Country	Registration-number
Kraftfahrt-Bundesamt (KBA)	Germany	KBA-P 00100-10
Vehicle Certification Agency (VCA)	United Kingdom	VCA-TS-006
Approval Authority of the Netherlands (RDW)	The Netherlands	RDWT-082-xx
National Standards Authority of Ireland (NSAI)	Ireland	Technical Service Number: 49
Société Nationale de Certification et d'Homologation s.à r.l. (SNCH)	Luxembourg	13/B(g)

München, 2020-06-24
(yyyy-mm-dd)



Erin Zeng

Test report No.: 20-00953-CX-SHA-00
Manufacturer: Quanzhou Kwok Shing Automobile Subassembly Co., Ltd.
Type: KS28.215A



Auto Service

Annex I Reason of Extension

Change of : 1. To change the trade mark
2. To change technical service to TUV SUD

Modification of : N/A

Addition of : N/A

Deletion of : N/A

INFORMATION DOCUMENT No.: KS28.215A-01

**relating to EC component type-approval of safety belts and restraint systems (77/541/EEC) as
last amended by Directive 2005/40/EC
ECE Regulation 16.06 Part I (component approval)**

0. GENERAL

- 0.1. Make (trade name of manufacturer) : [Quanzhou Kwok Shing Automobile Subassembly Co., Ltd.](#)
- 0.2. Type and general commercial description(s) : KS28.215A
two point automatically locking seat belt
- 0.5. Name and address of manufacturer : Quanzhou Kwok Shing Automobile Subassembly Co., Ltd.,
Kwok Shing Mansion, Wanggong Industrial Area,
Quanzhou City, Fujian Province, P.R. China
- 0.6. name of his representative Quanzhou Fuxing Plastic Hardware Co., Ltd.
- 0.7. In the case of components and separate technical units, location and method of affixing of the EC/ECE approval mark : Label stitched at lower outer sill anchor bracket on long end assembly.
- 0.8. Address(es) of assembly plant(s) : Same as above item 0.5

1. LIST OF VEHICLE(S) TO WHICH THE DEVICE IS INTENDED TO BE FITTED (if applicable)

- Make : VEGA
Vehicle type : VEGA
Vehicle category : M1/M2/M3
Location : BACK ROW

2. DESCRIPTION OF THE DEVICE

2.1. Safety belt

- 2.1.1. Configuration of safety belt (two-point belt, three-point belt, static, automatic) : The assembly is a 2 point lap configuration providing pelvic restraint. The short end assembly comprises of a metal strap type buckle assembly. The long end assembly comprises of an emergency locking retractor.
- Anchorage points : 1 anchorage point for the retractor;
1 anchorage point for the buckle assembly;
All of the above anchorage points are located on the seat structure.

INFORMATION DOCUMENT No.: KS28.215A-01

relating to EC component type-approval of safety belts and restraint systems (77/541/EEC) as last amended by Directive 2005/40/EC ECE Regulation 16.06 Part I (component approval)

2.1.2. Details of webbing

Long-end assembly :
Length: : 1400 mm
Material, : Polyester, Piece Dyed
Weaving pattern : 1:2 Broken Twill (9 Panel)
Width : 46.0 – 48.0mm
Colour : Black
Reference (P/N etc.) : ECE R16

Buckle assembly : Not applicable
Length: : ---
Material : ---
Weaving pattern : ---
Width : ---
Colour : ---
Reference (P/N etc.) : ---

2.1.3. Type of retractor (designation of retractor as per item 1.1.3.2.2 of Annex III to Directive 77/541/EEC) : Br3
Mechanism : (Automatically locking retractor)
Vehicle Sensitivity : KS28.215A
Webbing Sensitivity :
Inclination in relation to transversal plane : 90°
Inclination in relation to longitudinal plane : 0°
Reference : ECE R16.06

2.1.3.1. Information on additional functions, if applicable : Not applicable

2.1.4. Drawing of the rigid parts (as per item 1.2.1 of Annex I to Directive 77/541/EEC) :

Description	Part Number	Page
Buckle Components Details	KS28AM.2	10
Retractor assembly	KS28.HM.1	11
Slip guide assembly Components Details	KS28.HM.1	12
Slip guide assembly	Ks28.53..1.7.2	13
Tongue assembly	KS28.209.1.1.1	14
Buckle Anchor Brcket B	KS28.240B.2.1-1	15
Buckle Anchor Brcket A	KS28.215A.2.1-1	16
Webbing details		17
E-mark label drawing		18

Note: Part numbers are moulded on the each part

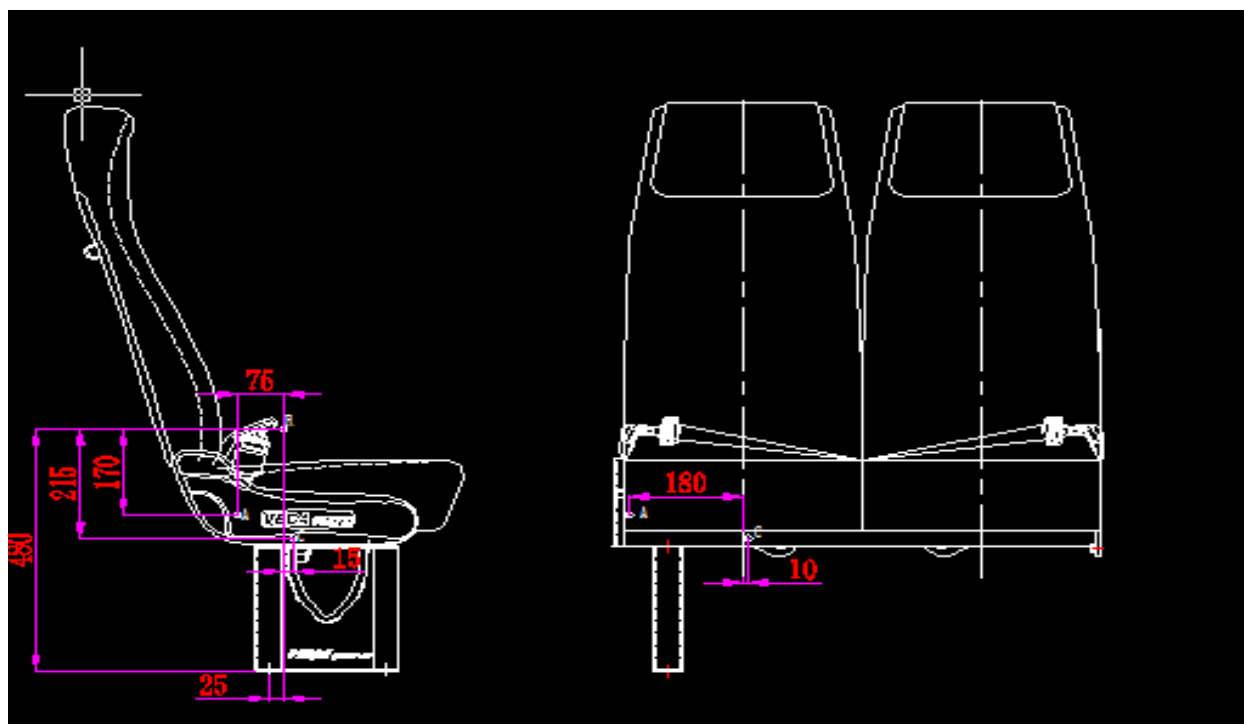
relating to EC component type-approval of safety belts and restraint systems (77/541/EEC) as
last amended by Directive 2005/40/EC
ECE Regulation 16.06 Part I (component approval)

- 2.1.5. Diagram of the safety belt assembly
enabling identification and location
of rigid parts :

Description	Part Number	Page
Photograph of the safety-belt assembly A	KS28.215A,	5
Photograph of the safety-belt assembly B	,KS28.215A	6
Long-end assembly	KS28.215A.1	7
Buckle assembly A	KS28.215A.2A	8
Buckle assembly B	KS28.215A.2B	9

- 2.1.6. Mounting instructions showing,
inter alia, the installation of the
retractor and its sensing device :

Anchorage Point Details (Installation)



Each anchorage points in relation to H-point	(Transverse) "X" – AXIS (L)	(Longitudinal) "Y" – AXIS (W)	(Horizontal) "Z" – AXIS (H)
Buckle anchorage	75	± 180	-170
Running loop (part of seat)	390	0	0
Retractor anchorage	15	± 10	-215

NOTE: The vehicle with coordinates according to Technical documentation 2.1.6 with a tolerance of ±50mm.

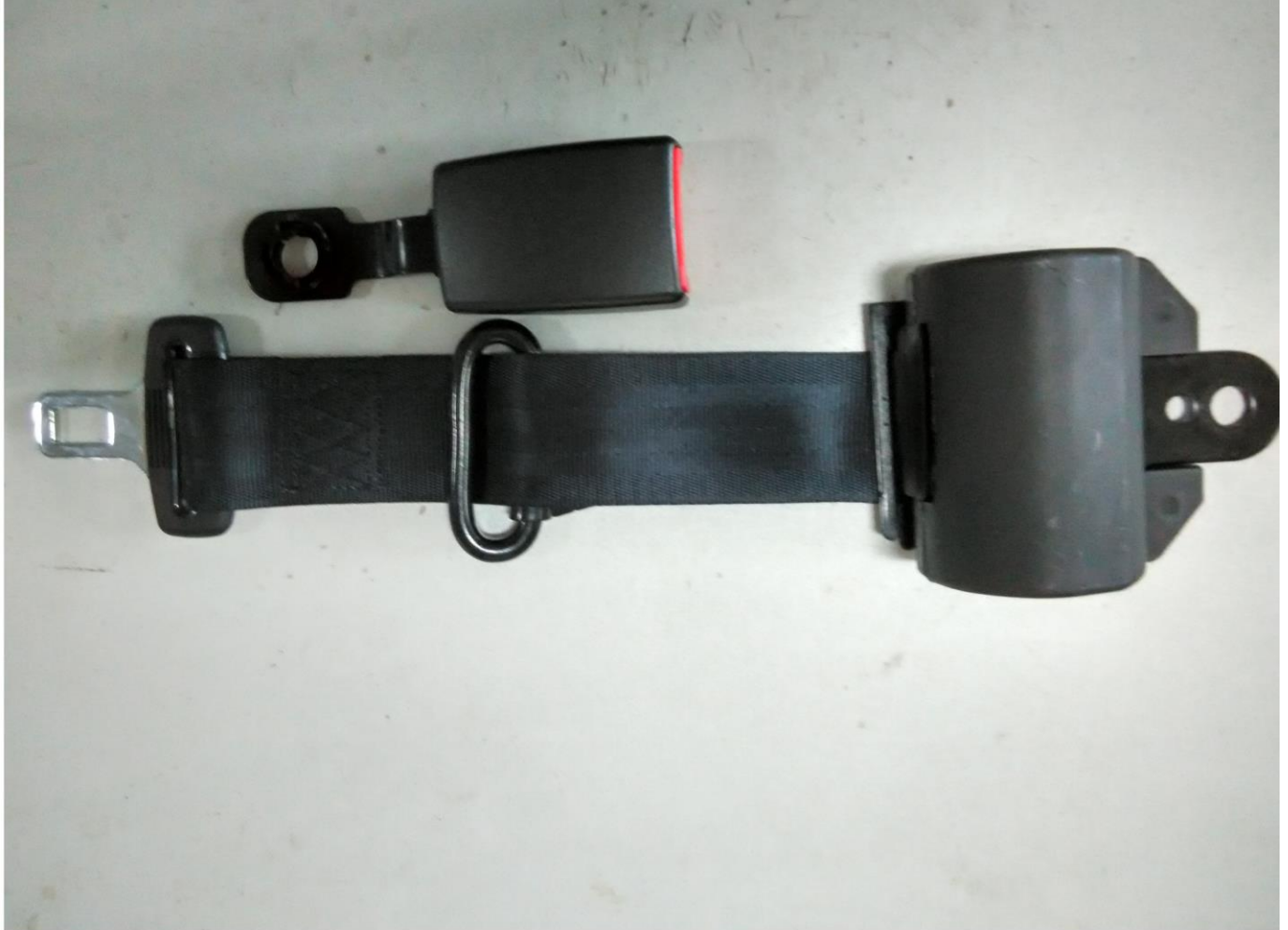
relating to EC component type-approval of safety belts and restraint systems (77/541/EEC) as
last amended by Directive 2005/40/EC
ECE Regulation 16.06 Part I (component approval)

- 2.1.7. If a device for adjusting the belt height is present, state whether it is considered to be part of the belt : Not applicable
Travel : ---
Number of positions : ---
Assembly bolts : ---
- 2.1.8. In the case of a pre-loading device or system, a full technical description of the construction and function including any sensing device, describing the method of activation and any necessary method to avoid inadvertent activation : Not applicable
- 2.2. Restraint system Not applicable
- 2.3. Child restraint system Not applicable

Note : This seat belt is not made up of materials with properties of Polyamide 6 as regards water retention.
These materials are prohibited in all mechanical parts for which such a phenomenon is likely to have an adverse effect on their operation.

relating to EC component type-approval of safety belts and restraint systems (77/541/EEC) as
last amended by Directive 2005/40/EC
ECE Regulation 16.06 Part I (component approval)

Photograph of the safety-belt assembly A



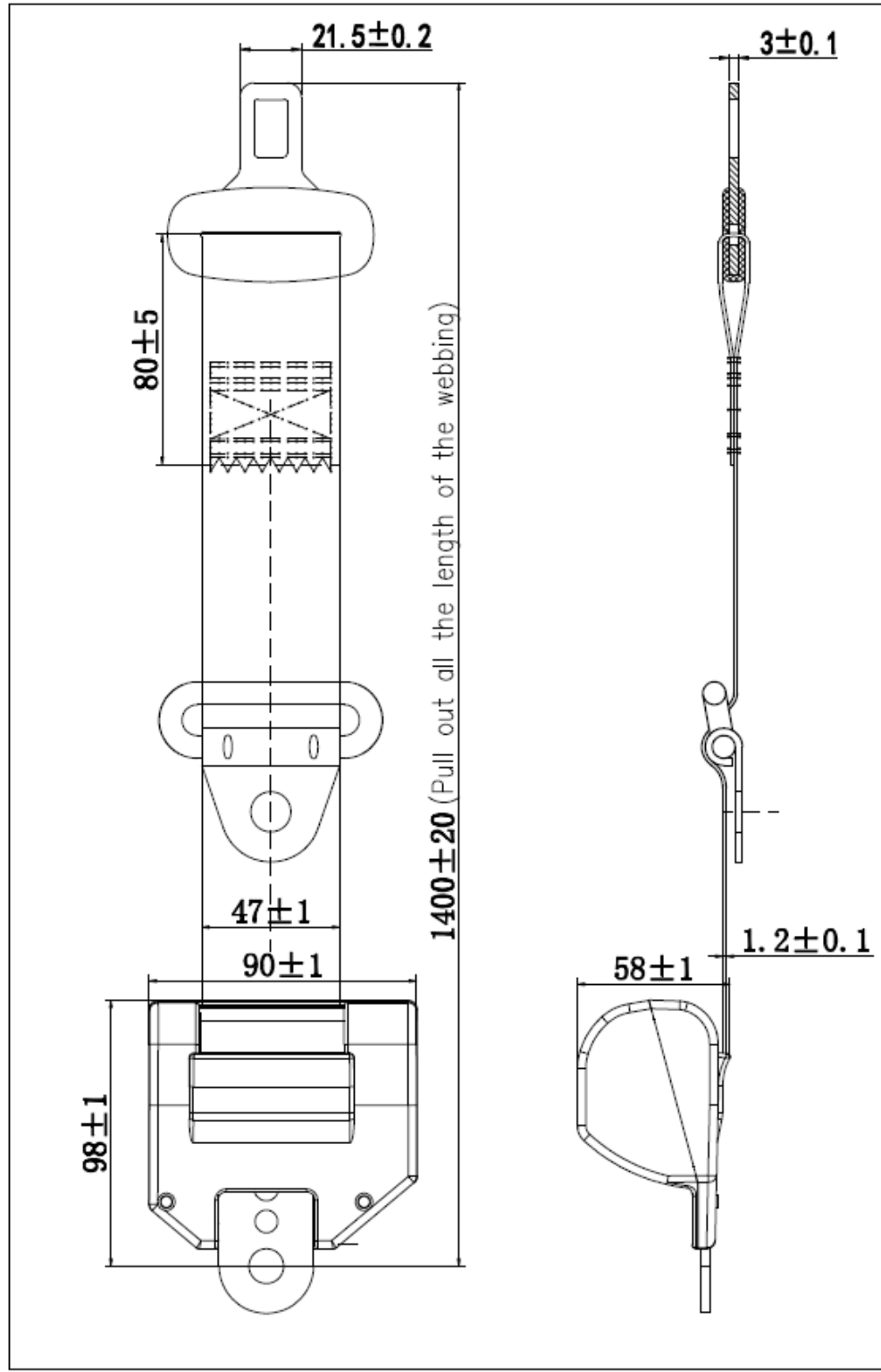
relating to EC component type-approval of safety belts and restraint systems (77/541/EEC) as
last amended by Directive 2005/40/EC
ECE Regulation 16.06 Part I (component approval)

Photograph of the safety-belt assembly B



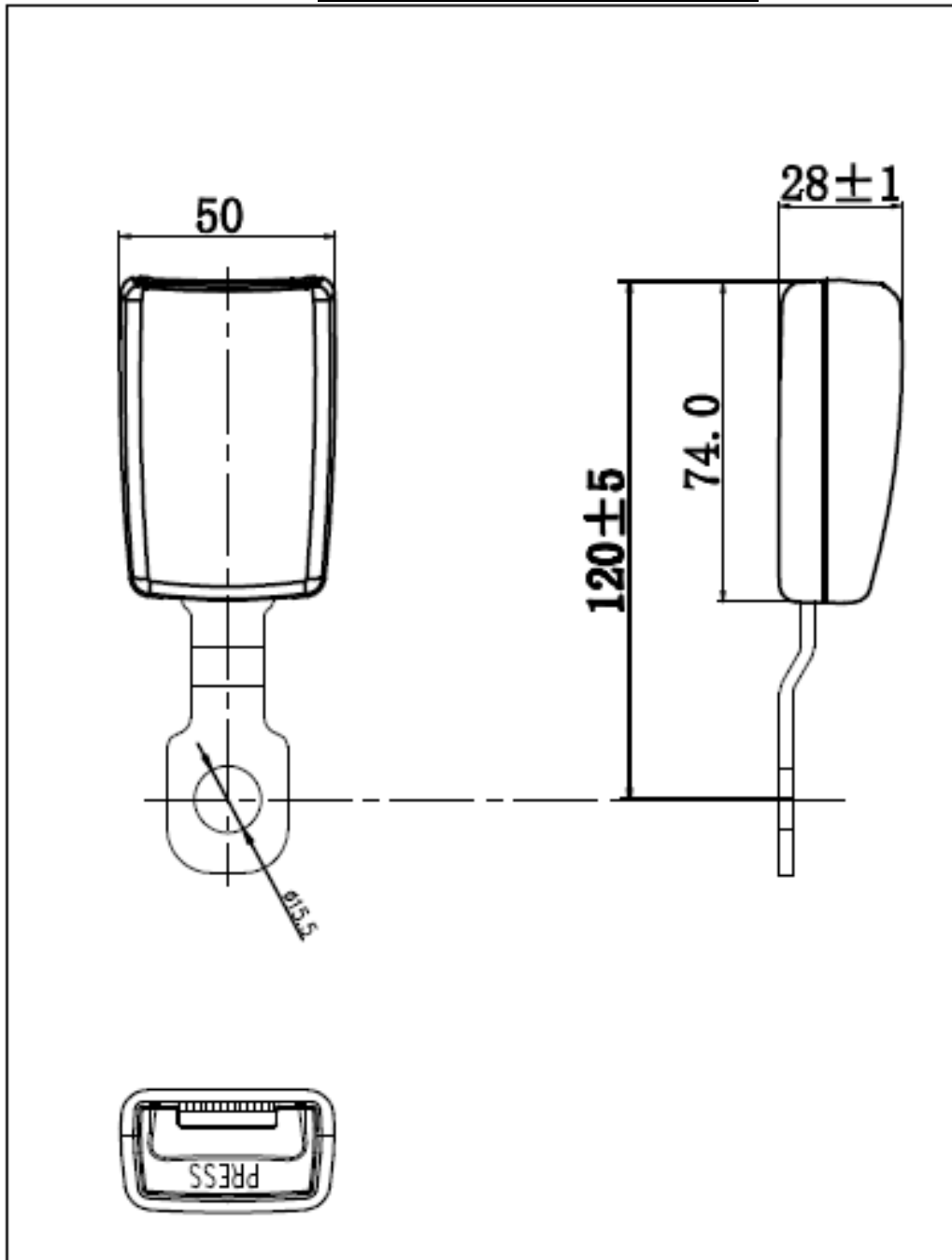
relating to EC component type-approval of safety belts and restraint systems (77/541/EEC) as
last amended by Directive 2005/40/EC
ECE Regulation 16.06 Part I (component approval)

Long-end assembly



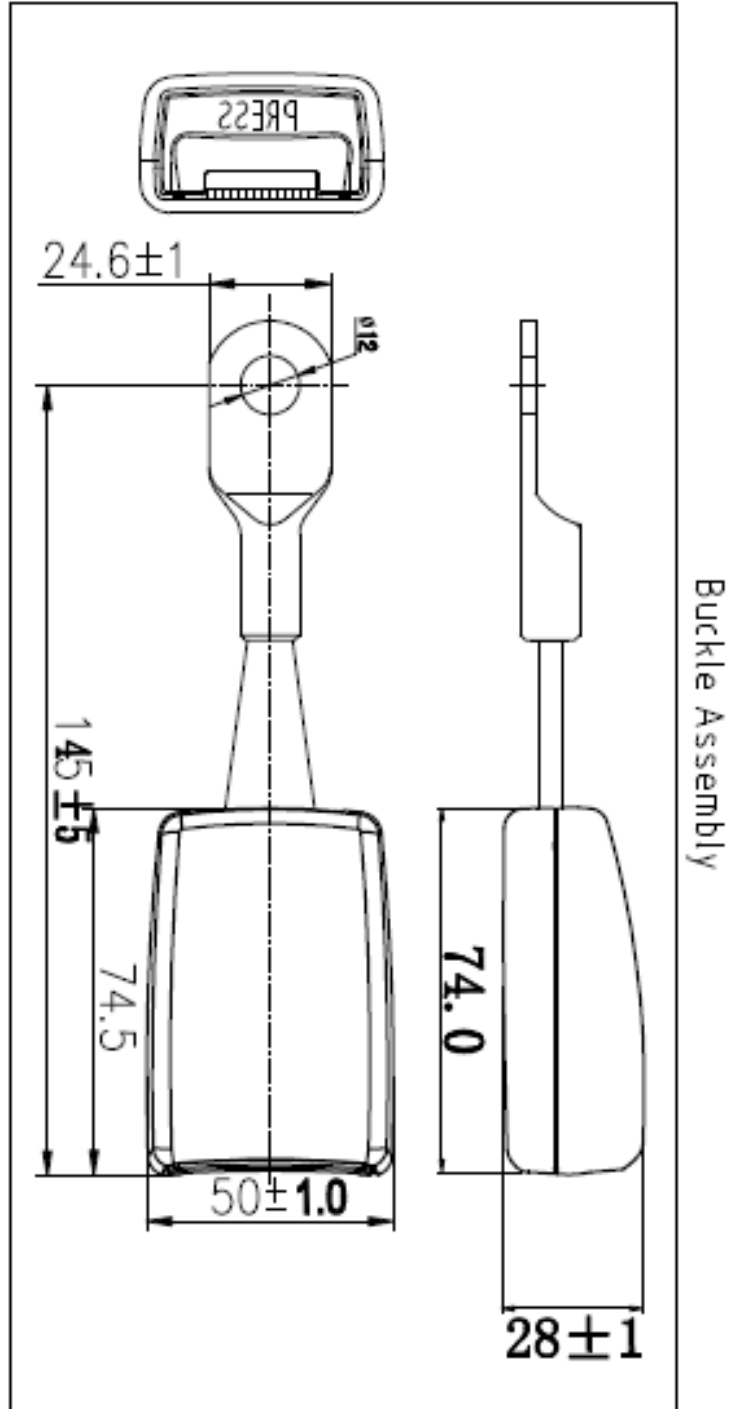
relating to EC component type-approval of safety belts and restraint systems (77/541/EEC) as
last amended by Directive 2005/40/EC
ECE Regulation 16.06 Part I (component approval)

Buckle assembly A (KS28.215A.2A)



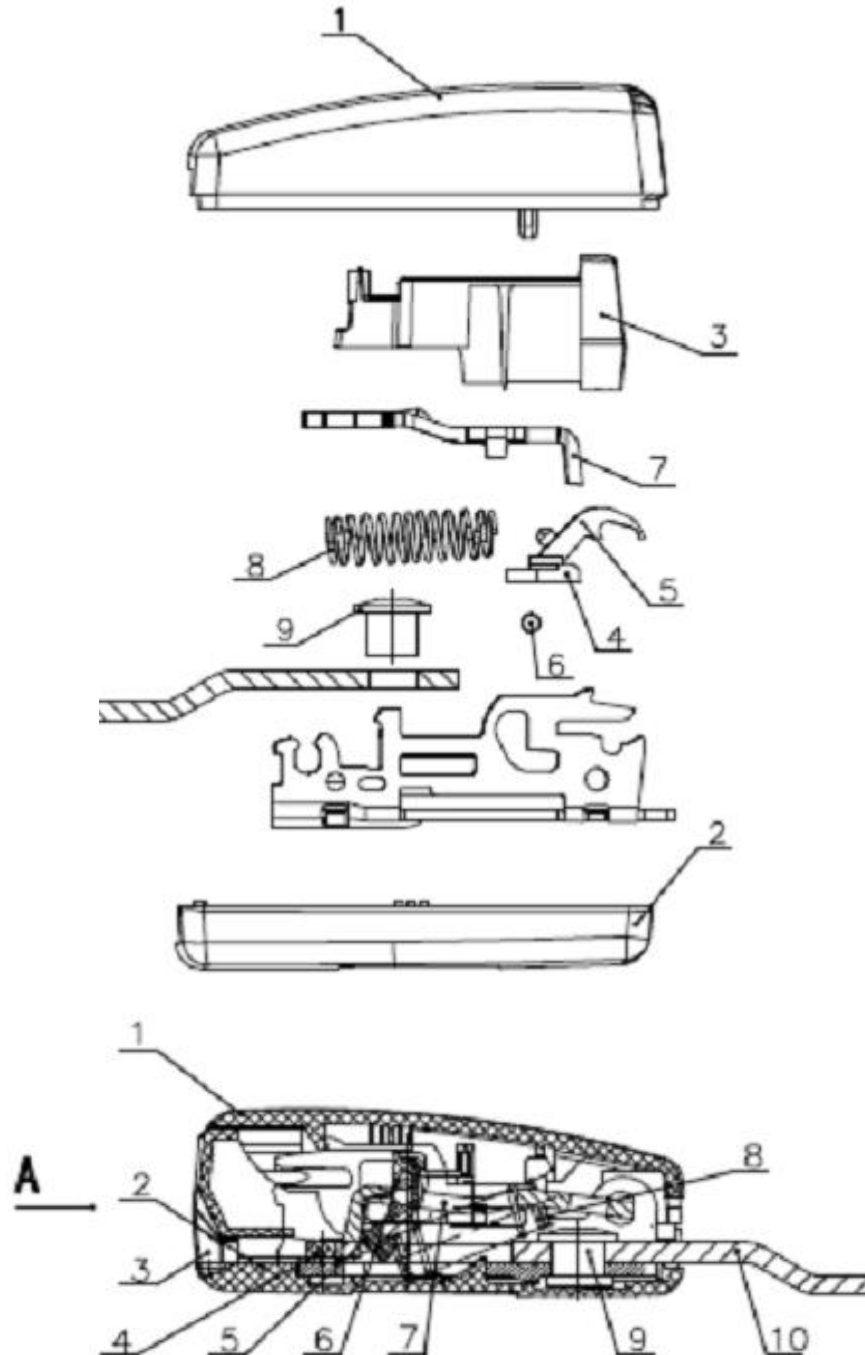
relating to EC component type-approval of safety belts and restraint systems (77/541/EEC) as
last amended by Directive 2005/40/EC
ECE Regulation 16.06 Part I (component approval)

Buckle assembly B(KS28.215A.2B)



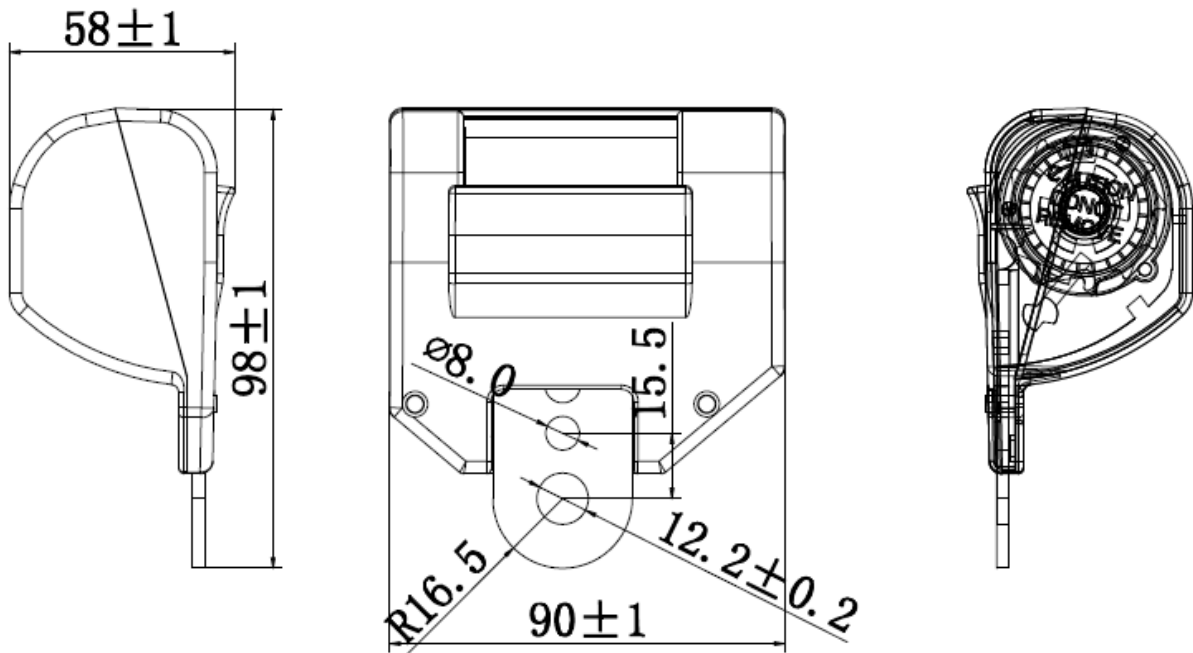
relating to EC component type-approval of safety belts and restraint systems (77/541/EEC) as
last amended by Directive 2005/40/EC
ECE Regulation 16.06 Part I (component approval)

Buckle Components Details



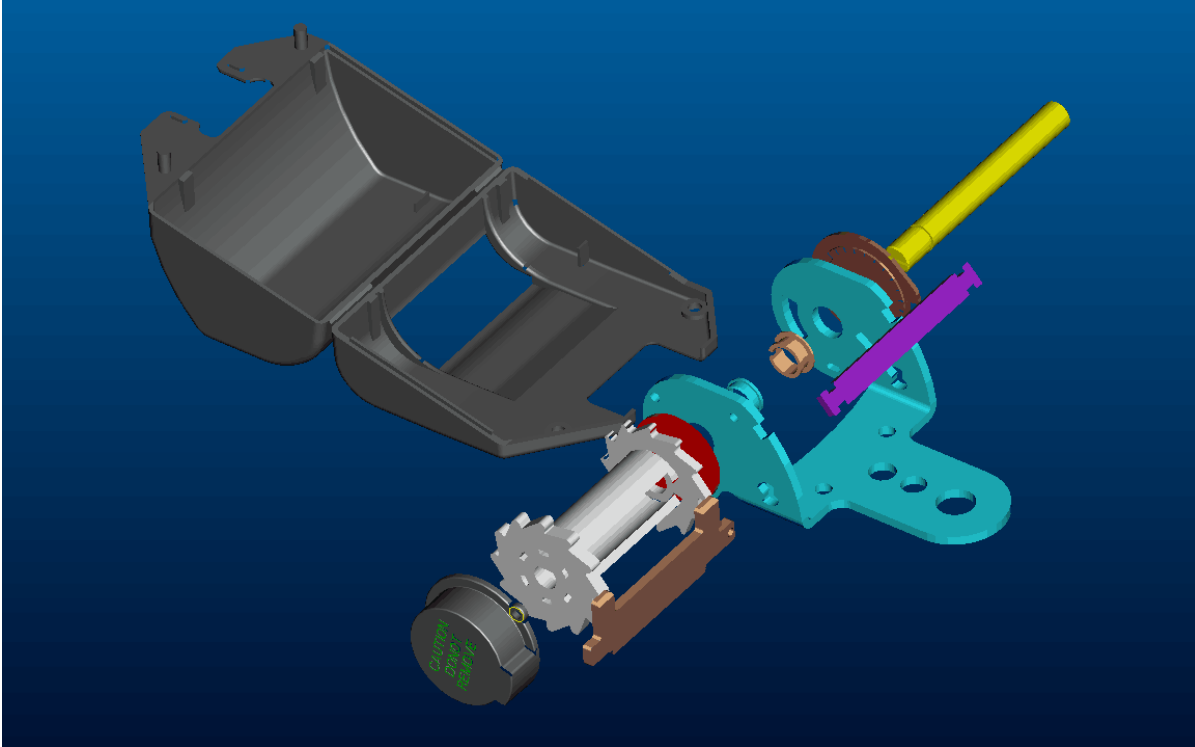
relating to EC component type-approval of safety belts and restraint systems (77/541/EEC) as
last amended by Directive 2005/40/EC
ECE Regulation 16.06 Part I (component approval)

Retractor assembly



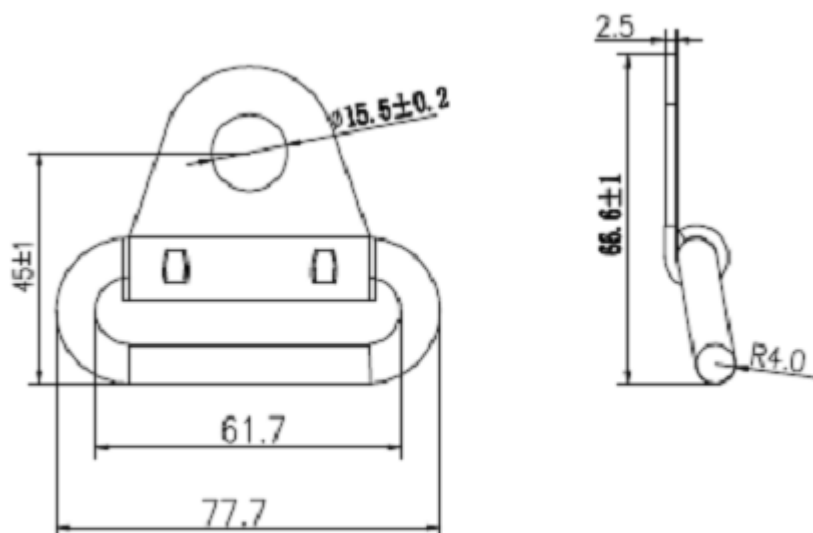
relating to EC component type-approval of safety belts and restraint systems (77/541/EEC) as
last amended by Directive 2005/40/EC
ECE Regulation 16.06 Part I (component approval)

Retractor assembly Components Details



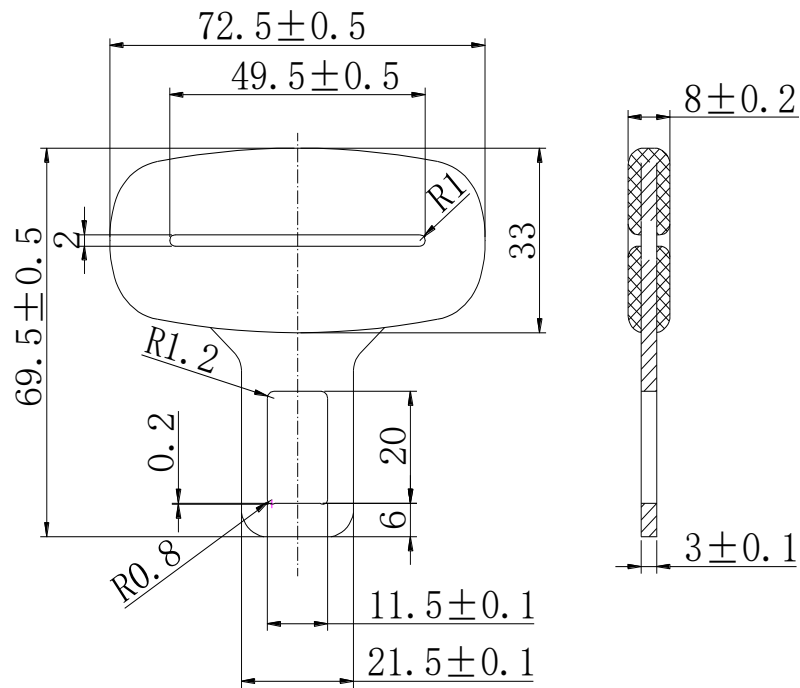
relating to EC component type-approval of safety belts and restraint systems (77/541/EEC) as
last amended by Directive 2005/40/EC
ECE Regulation 16.06 Part I (component approval)

Slip guide assembly



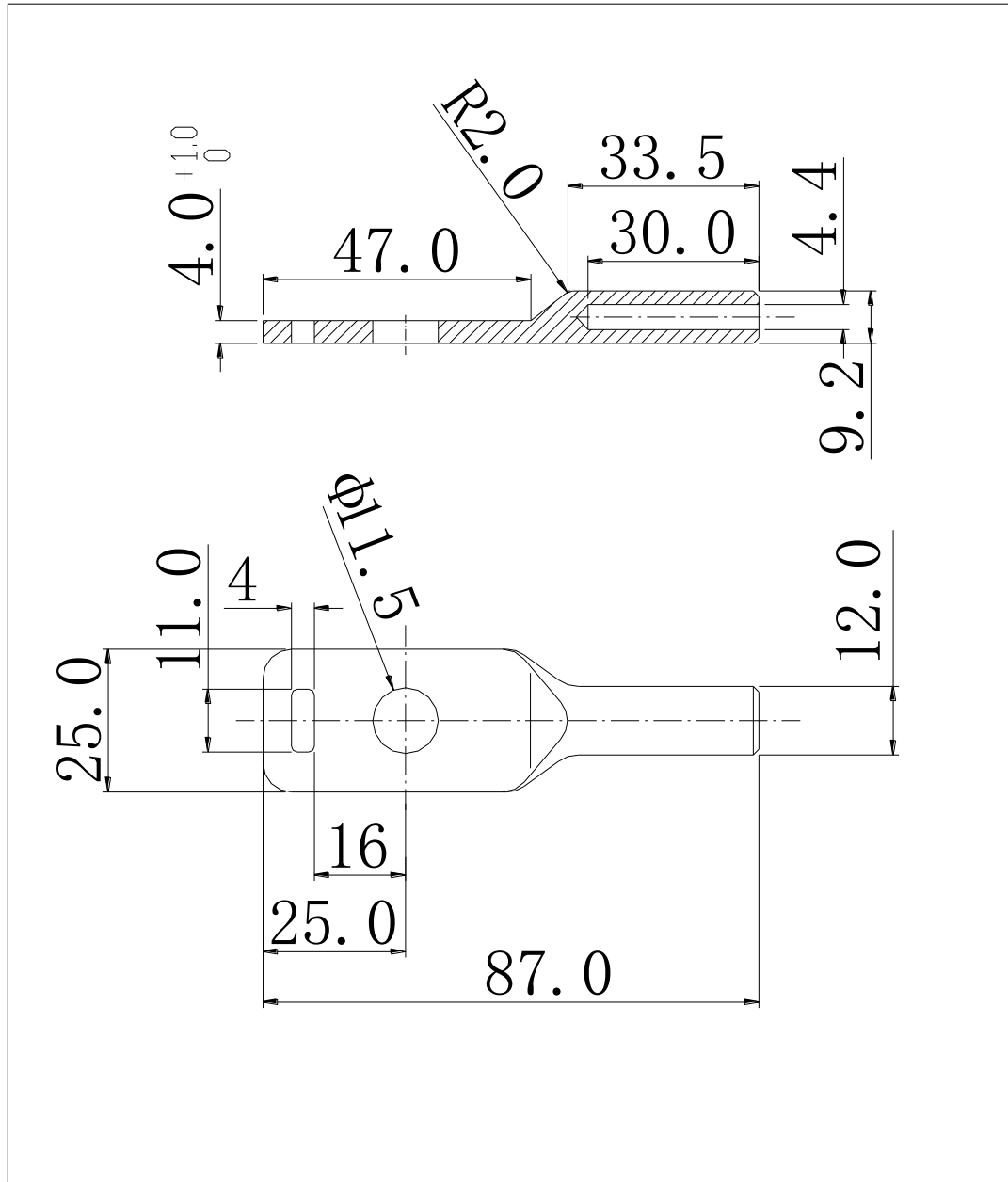
relating to EC component type-approval of safety belts and restraint systems (77/541/EEC) as
last amended by Directive 2005/40/EC
ECE Regulation 16.06 Part I (component approval)

Tongue assembly



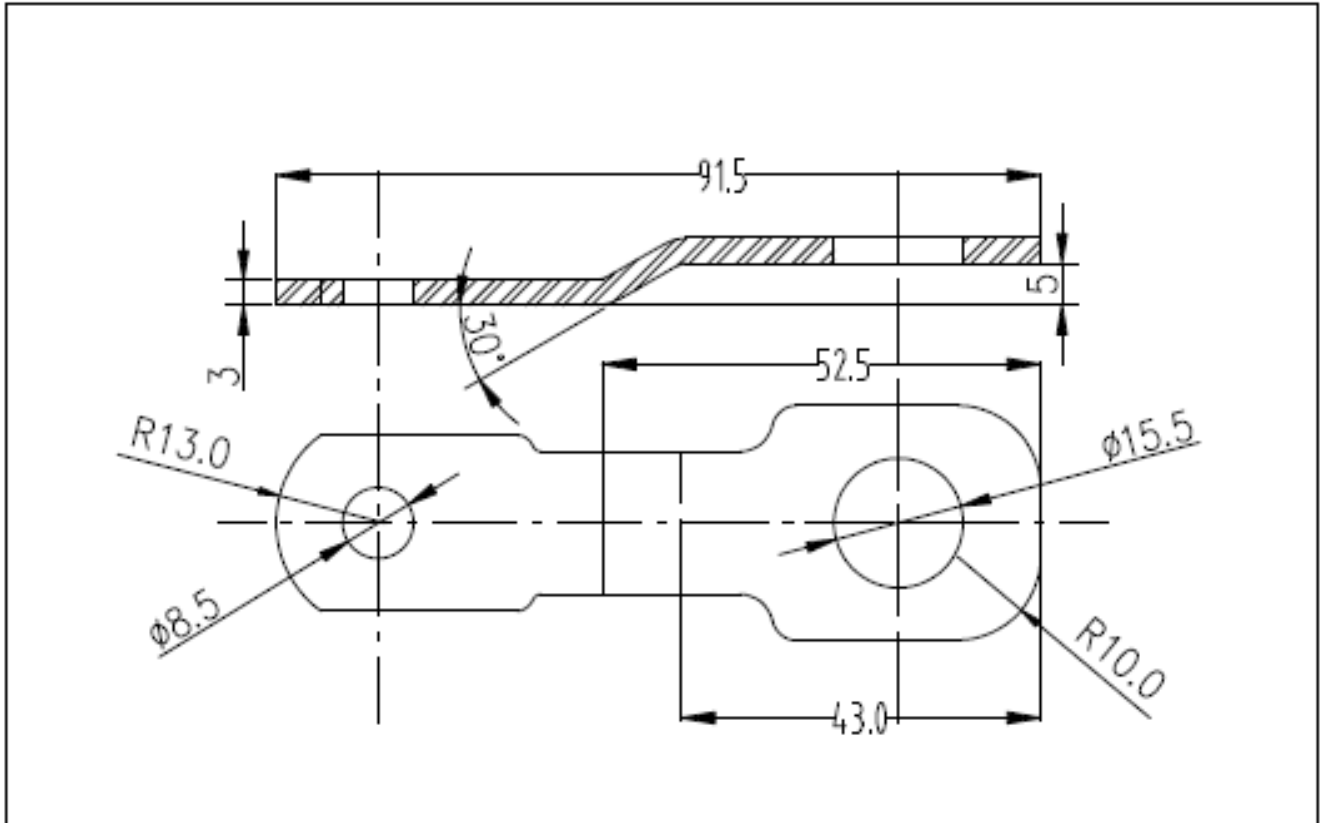
relating to EC component type-approval of safety belts and restraint systems (77/541/EEC) as
last amended by Directive 2005/40/EC
ECE Regulation 16.06 Part I (component approval)

Buckle Anchor Bracket B



relating to EC component type-approval of safety belts and restraint systems (77/541/EEC) as
last amended by Directive 2005/40/EC
ECE Regulation 16.06 Part I (component approval)

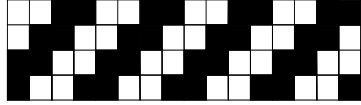
Buckle Anchor Bracket



INFORMATION DOCUMENT No.: KS28.215A-01

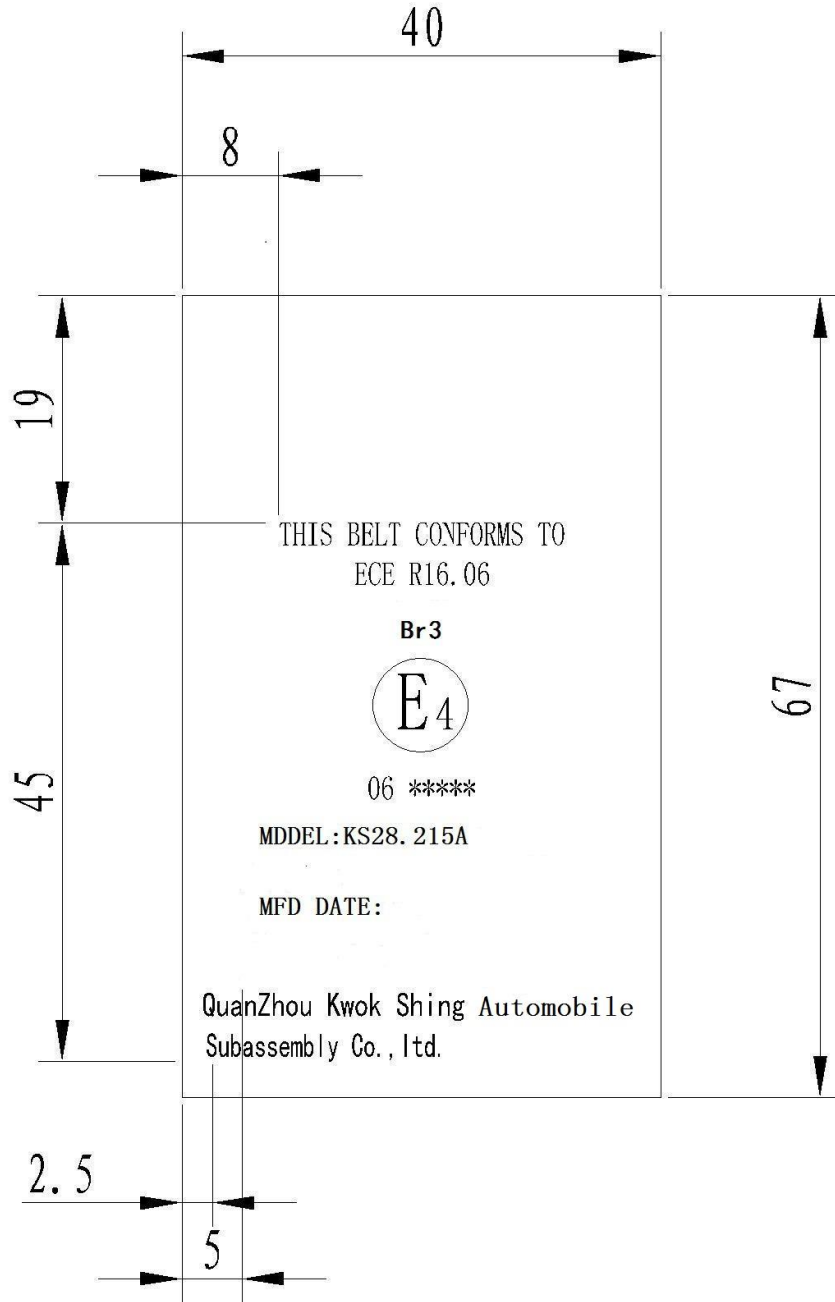
**relating to EC component type-approval of safety belts and restraint systems (77/541/EEC) as
last amended by Directive 2005/40/EC
ECE Regulation 16.06 Part I (component approval)**

Webbing details

Material	Polyester
Webbing specification	C07
Color	Black
Weaving pattern	
Warp yarn	1000dtex
Weft yarn	500dtex
Thread count	Warp: 380, Weft: 18.8 picks/inch
Width	46~48mmm
Thickness	1.0~1.2mm

relating to EC component type-approval of safety belts and restraint systems (77/541/EEC) as
last amended by Directive 2005/40/EC
ECE Regulation 16.06 Part I (component approval)

E-mark label drawing 错误!不能通过编辑域代码创建对象。



INFORMATION DOCUMENT No.: KS28.215A-01

**relating to EC component type-approval of safety belts and restraint systems (77/541/EEC) as
last amended by Directive 2005/40/EC
ECE Regulation 16.06 Part I (component approval)**

Application for approval

Subject	:	Safety belt
Manufacturer	:	Quanzhou Kwok Shing Automobile Subassembly Co., Ltd.
Component type	:	KS28.215A
Existing approval number	:	E4-16R-0644804 Ext. 00
Reason for extension 01	:	1. To change the trade mark 2. To change technical service to TUV SUD
Date	:	June 20, 2020