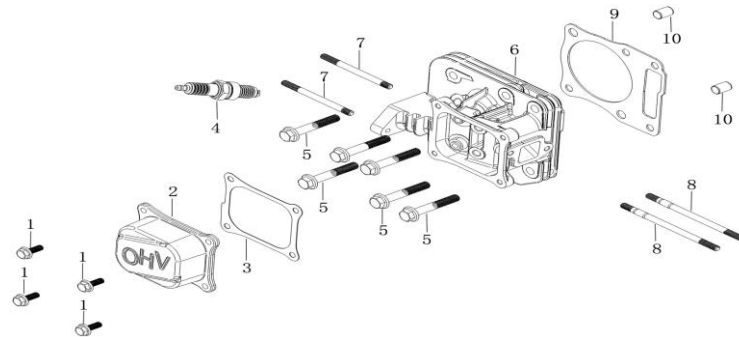


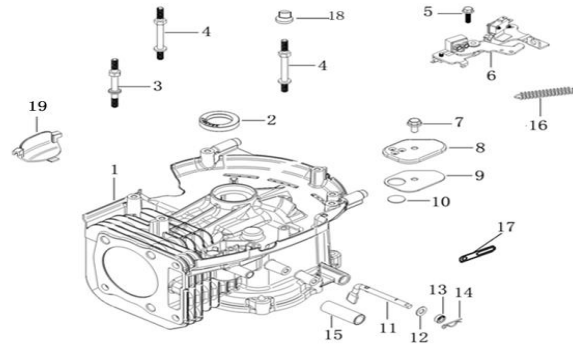


<b>Model</b>	<b>LC1P70F-3</b>
Engine type	Single cylinder, Air cooled, 4-stroke. OHV
Displacement	196cc
Net power	4.0kW/3600r/min
Bore x Stroke	70mm×50.84mm
Net torque	12/2500Nm / r / min
Starting system	Recoil/Electric
Lubrication system	Splash
Air filter	Dual-filter element
Engine oil capacity	0.5L
Fuel tank capacity	1.4kg
Net weight	12.8kg
Dimension	384mm×341mm×258mm



### 气缸头 ( CYLINDER HEAD)

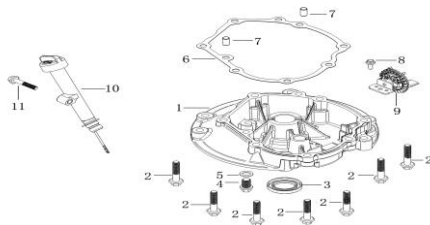
序号	零部件件号	零部件名称	Description	规格状态	数量	易损属性
No.	Part No.				Reqd. QTY	CONSUMABLE GRADE
1			Hexagon bolt with flange	GB/T 5789_M6_L=16;镀蓝白锌Q16	4	C
2			Cylinder head cover	T450_2#_铝合金;	1	C
3	120250059-0001	气缸头盖密封垫	Gasket for cylinder head cover	T450_不含石棉纸垫;	1	A
4	270960014-0001	火花塞	Spark plug	F7RTC_无干扰;	1	A
5			Hexagon bolt with flange	T320_M8_L=50;镀蓝白锌Q16	6	C
6			Cylinder head	T450;通机规格变更号TJ-GGBG 2018062	1	B
7			Stud	T300_M6_L=84;镀蓝白锌Q16	2	C
8			Stud	T040_M6_L=113;镀蓝白锌Q16	2	A
9	120150262-0002	气缸头密封垫	Gasket for cylinder head	T342_石墨;通机规格变更号TJ-GGBG 20	1	A
10			ocation pin	T040_d=10_L=14;	2	C



### 曲轴箱(CRANK CASE)

序号	零部件件号	零部件名称	Description	规格状态	数量	易损属性
No.	Part No.				Reqd. QTY	CONSUMABLE GRADE
1			Crankcase body	T342;通机规格变更号TJ-GGBG 20	1	B
2			Oil seal	T320_d=25_D=38_b=7;	1	B
3			Stay stud	T320_M6_L=78.5;镀蓝白锌Q16	1	C
4			Stay stud	T340_M6_L=85;镀蓝白锌Q16	2	C
5			Hexagon bolt with flange	GB/T 5789_M6_L=22;镀蓝白锌Q16	1	C
6	293030019-0001	发动机制动器	Engine brake	T450_普通状态;	1	B
7			Hexagon bolt with flange	GB/T 5789_M6_L=12;镀蓝白锌Q16	1	C
8			CAP,BREATHER CHAMBER	T450;	1	C
9			PACKING, BREATHER CHAMBER	T450_软木橡胶板;	1	A
10			Breath fin	T302;	1	A
11			Speed regulating arm	T450;	1	B
12			Flat washer	T05K_T21_内径6_外径13_厚度1_6	1	C
13			Oil seal	T320_d=6_D=11_b=4;	1	B
14			Pin clip	T040_调速臂用;	1	A



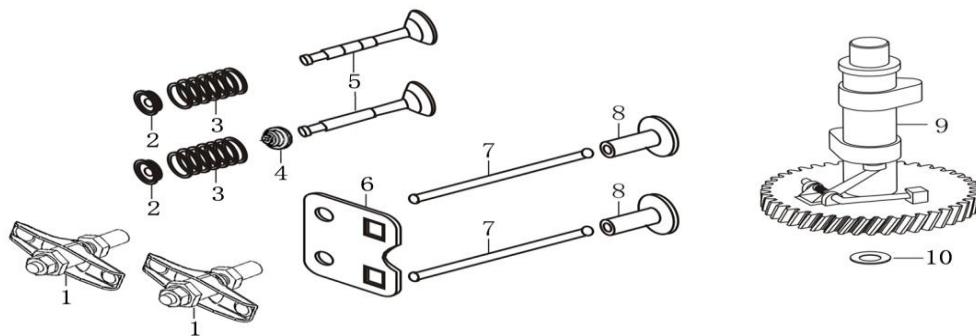


### 曲轴箱盖 (CRANK CASE COVER)

序号 No.	零部件号 Part No.	零部件名称	Description	规格状态	数量 Reqd. QTY
1			Crankcase cover	T450_1#,底部放油螺栓孔_安装高度35;	1
2			Hexagon bolt with flange	GB/T 16674.1_M8_L=40;镀蓝白锌Q16	7
3	380650347-0001	油封	Oil seal	T320_d=25_D=41.25_b=6_丙烯酸脂CII;	1
4			Sealing plug screw	T040_M10×1.25×15;镀蓝白锌Q16	1
5			Flat washer	T040_T21_内径10_外径16_厚度1.5_铝	1
6	110830062-0001	曲轴箱盖密封垫	Crankcase cover gasket	T450;	1
7			ocation pin	T040_d=8_L=14;	2
8			Hexagon bolt with flange	GB/T 16674.1_M5_L=12;镀蓝白锌Q16	1
9			Components of governor gear	T450;	1
10	110690105-0002	机油尺组合	Oil rule combination	T450_2#,加油管加大;本色黄5#Q82,杆氧	1
11			Hexagon bolt with flange	GB/T 5789_M6_L=35;镀蓝白锌Q16	1

--

易损属性
CONSUMABLE GRADE
C
A
C
C
C
C
A
C
B
B
C



### 配气机构 (Camshaft)

序号	零部件件号	零部件名称	Description	规格状态	数量	易损属性
No.	Part No.				Reqd. QTY	CONSUMABLE GRADE
1		Valve rocker combination	T040;含Hg/Cr6/Pb/PBB/PBDE≤1000pp	2	B	
2		Retainer, valve spring	T320_排气门用;	2	B	
3		Inner spring of valve	T322_7圈;含Hg/Cr6/Pb/PBB/PBDE≤10	2	B	
4		Valve oil seal	T05K;含Hg/Cr6/Pb/PBB/PBDE≤1000pp	1	B	
5		Valve Kit	T450;	1	B	
6		Plate, push rod guide	T450;镀蓝白锌Q16	1	B	
7		Push rod	T350_长140_整体实芯;	2	B	
8		Lifter, Valve	T040;含Hg/Cr6/Pb/PBB/PBDE≤1000pp	2	B	
9		Camshaft assy	T450_塑料齿2#;	1	B	
10		Flat washer	T320_T21_内径14.2_外径20_厚度1;抛光	1	C	



















